

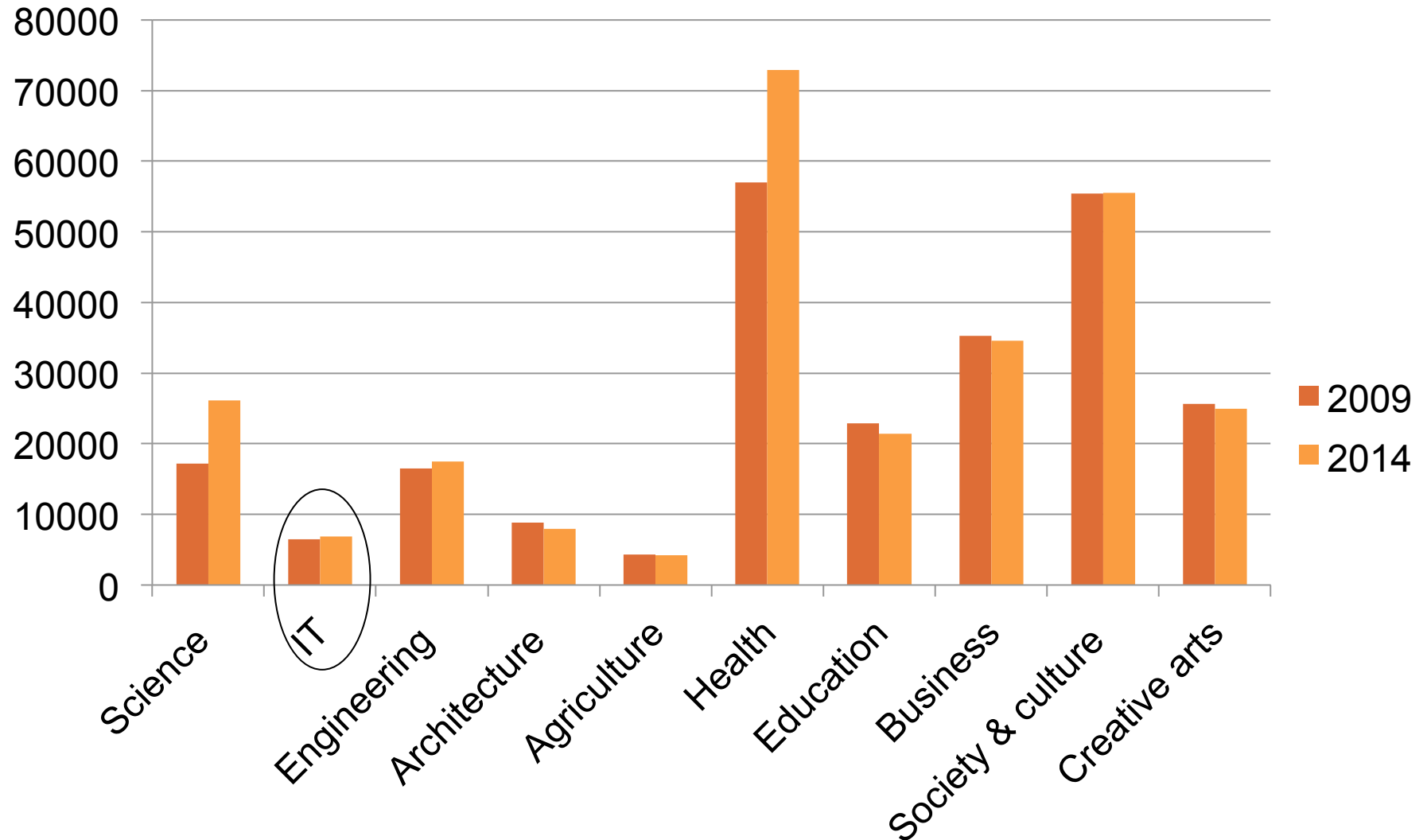


The demand driven system, policy reform and ICT

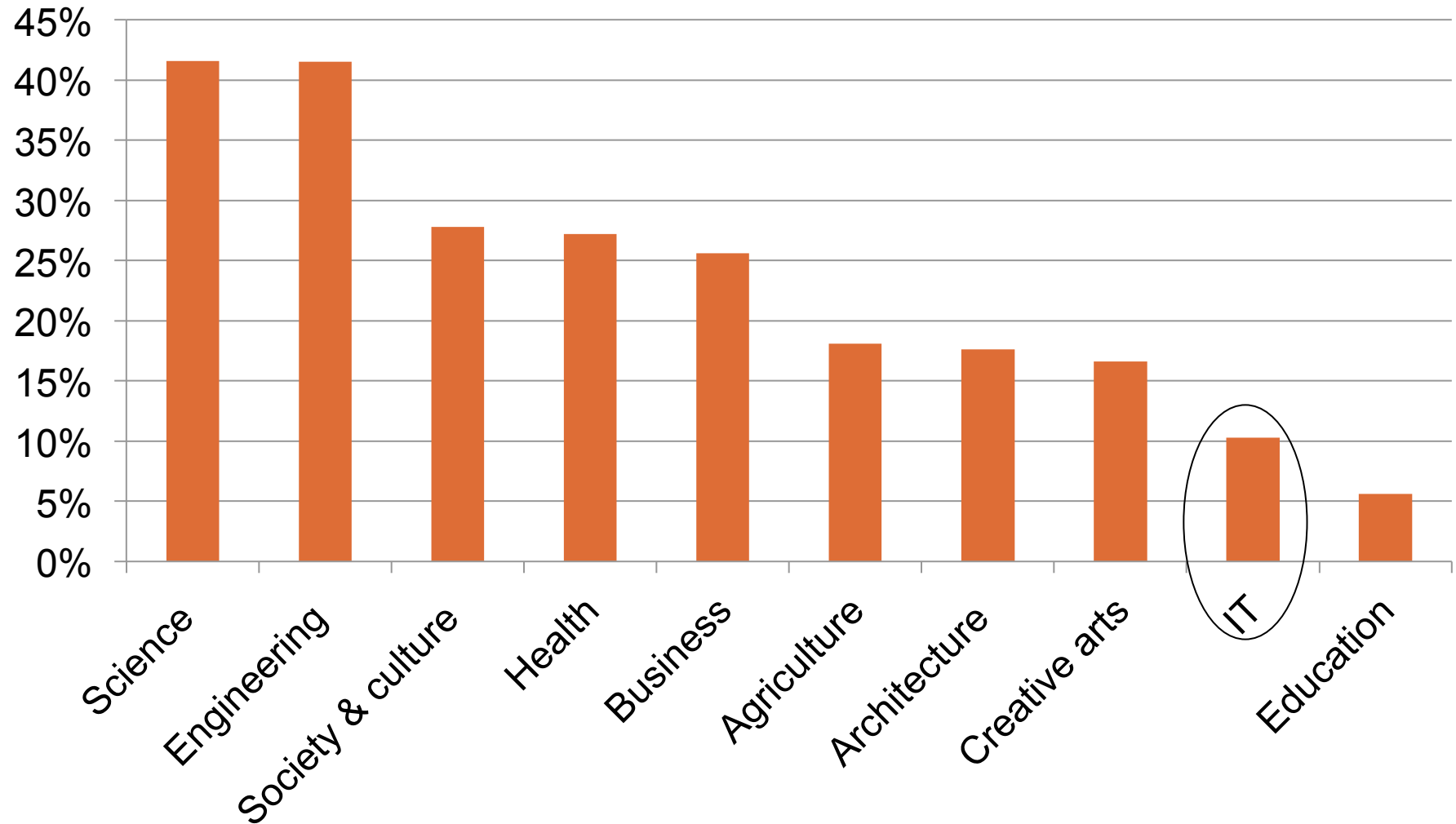
**Andrew Norton
t:@andrewjnorton**

8 July, 2014

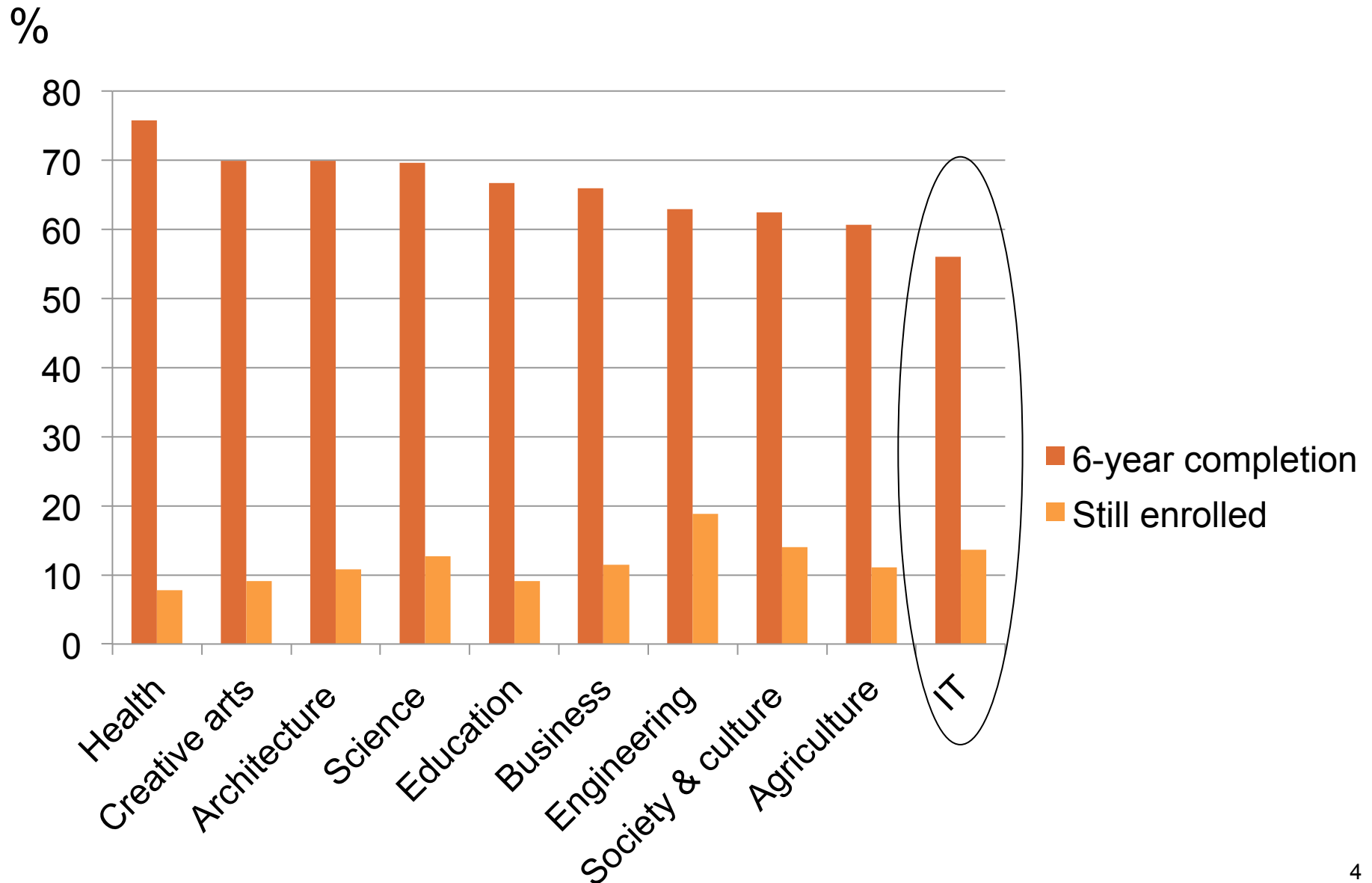
Applications through tertiary admissions centres since 2009



Percentage of offers going to 90+ ATAR students



Six year completion rates, bachelor degree commencers 2007-2012

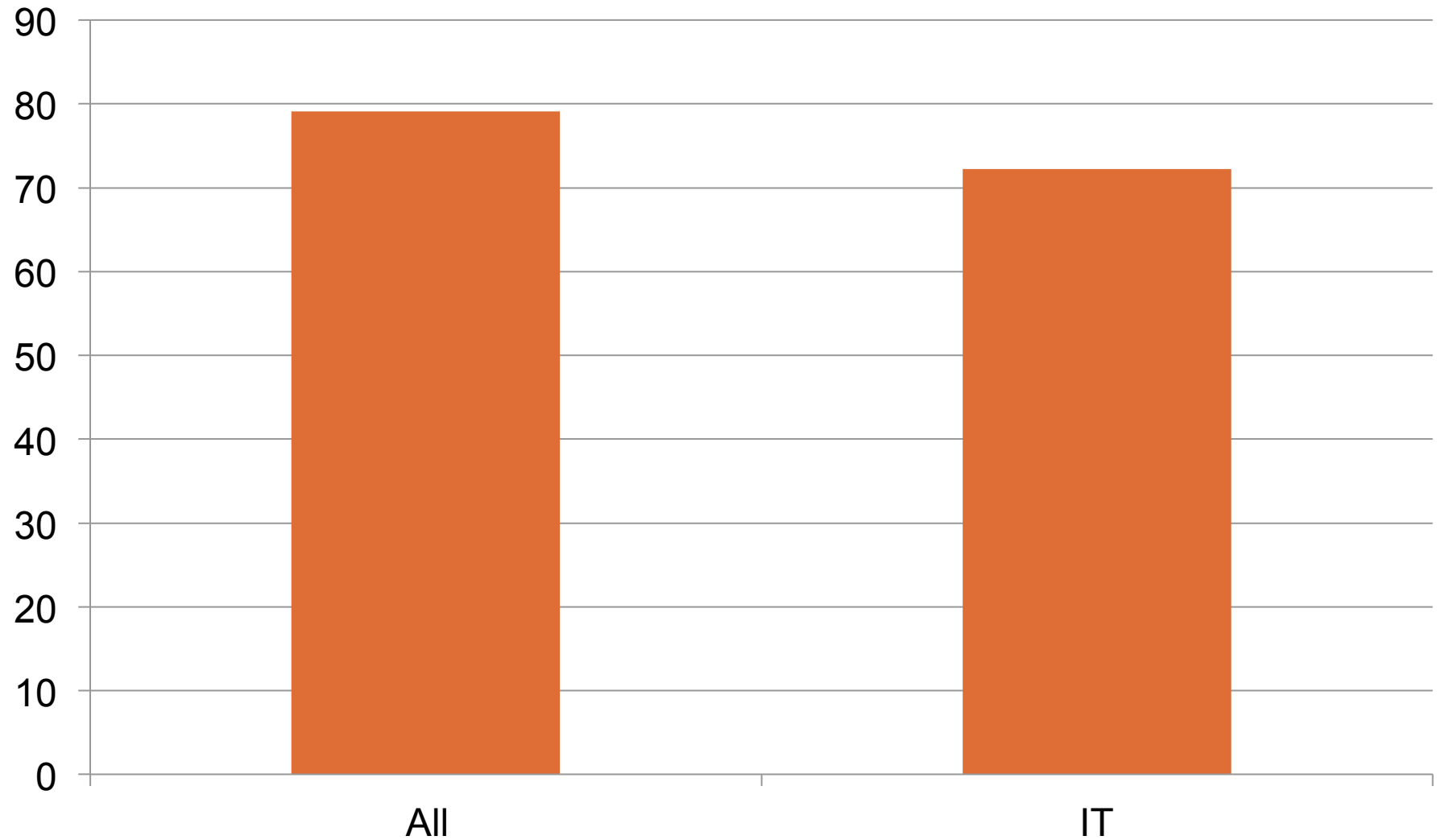


Quality Indicators for Learning and Teaching (QUILT)

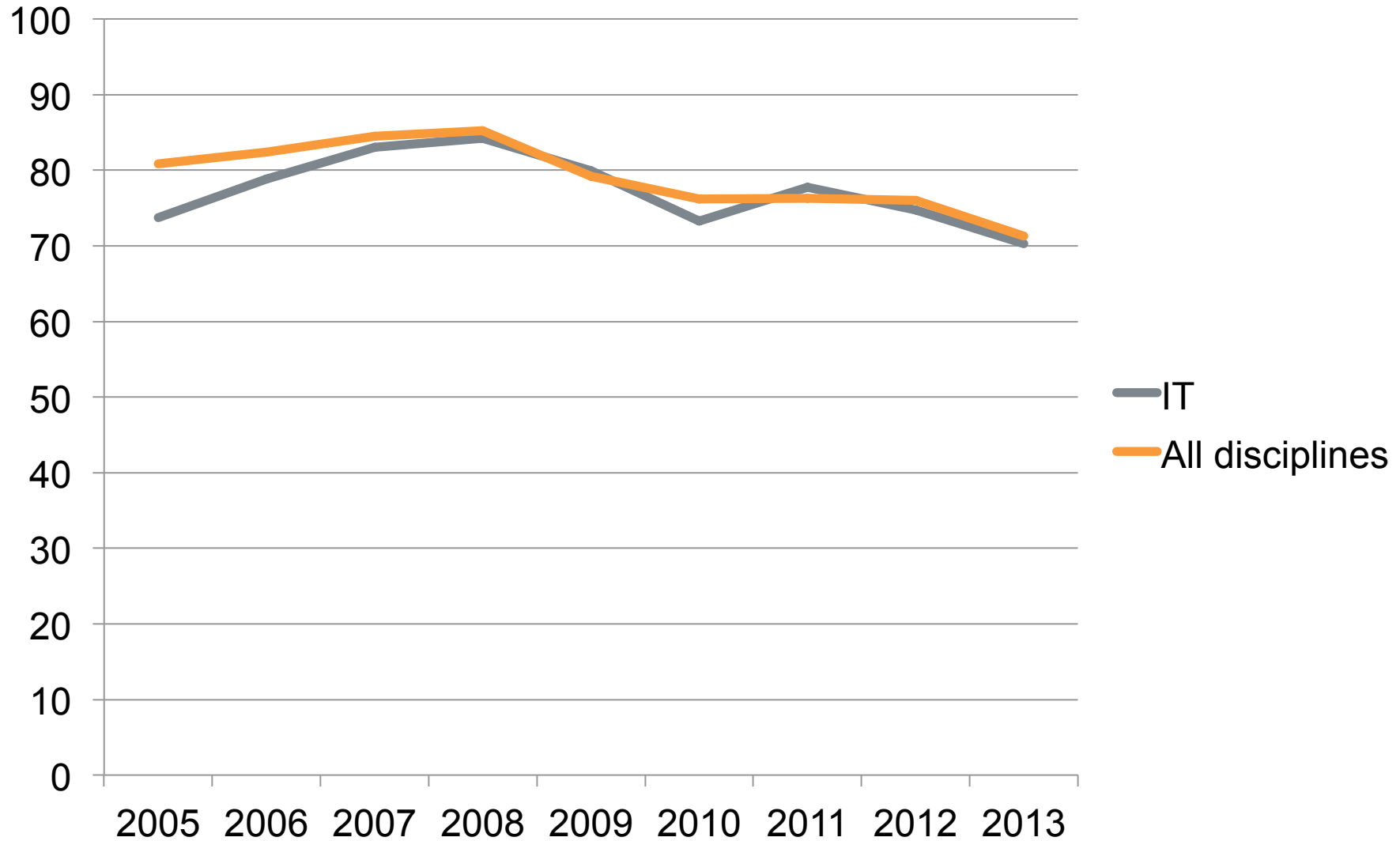


To be replaced

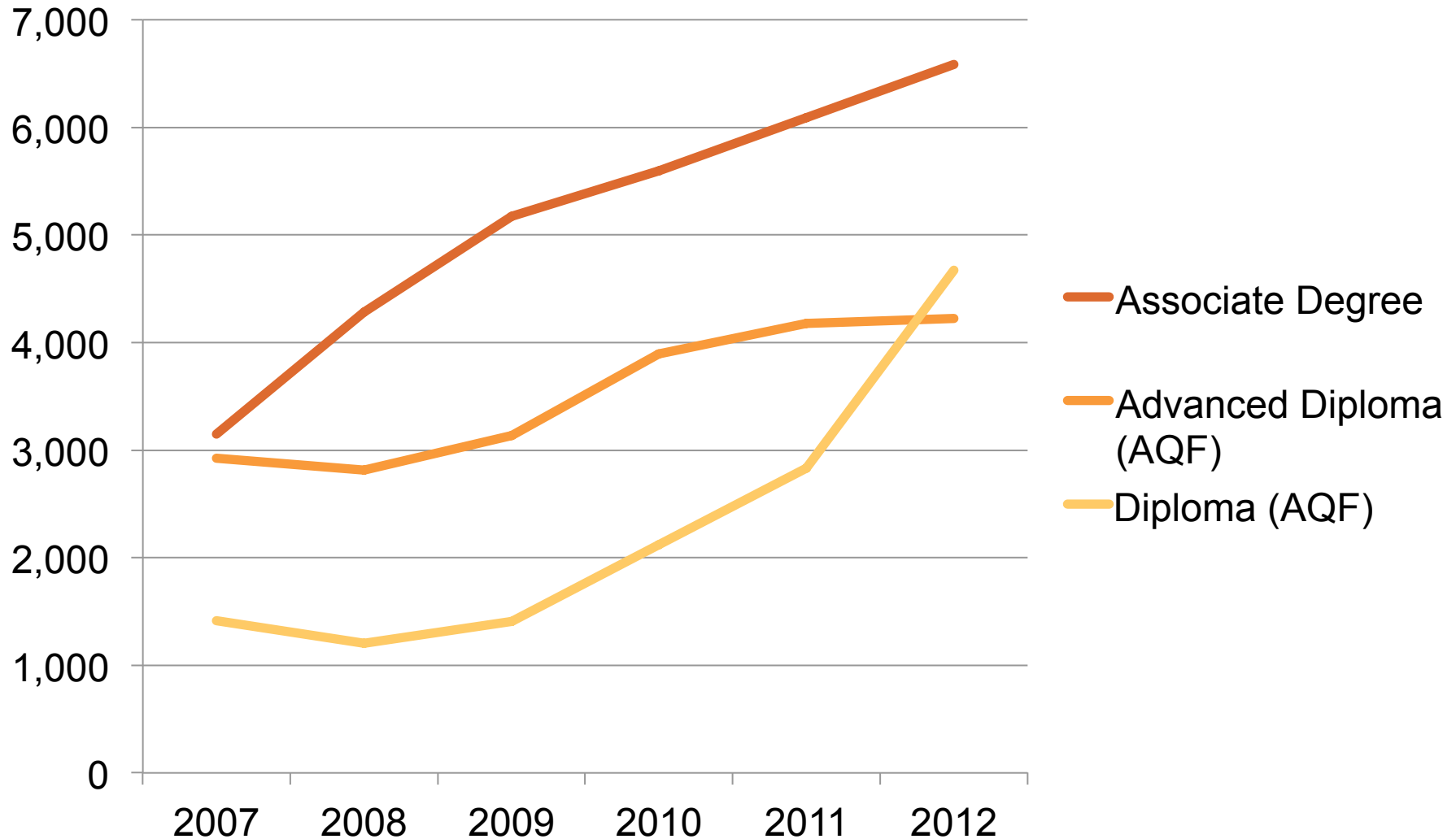
Satisfaction with quality of teaching 2013



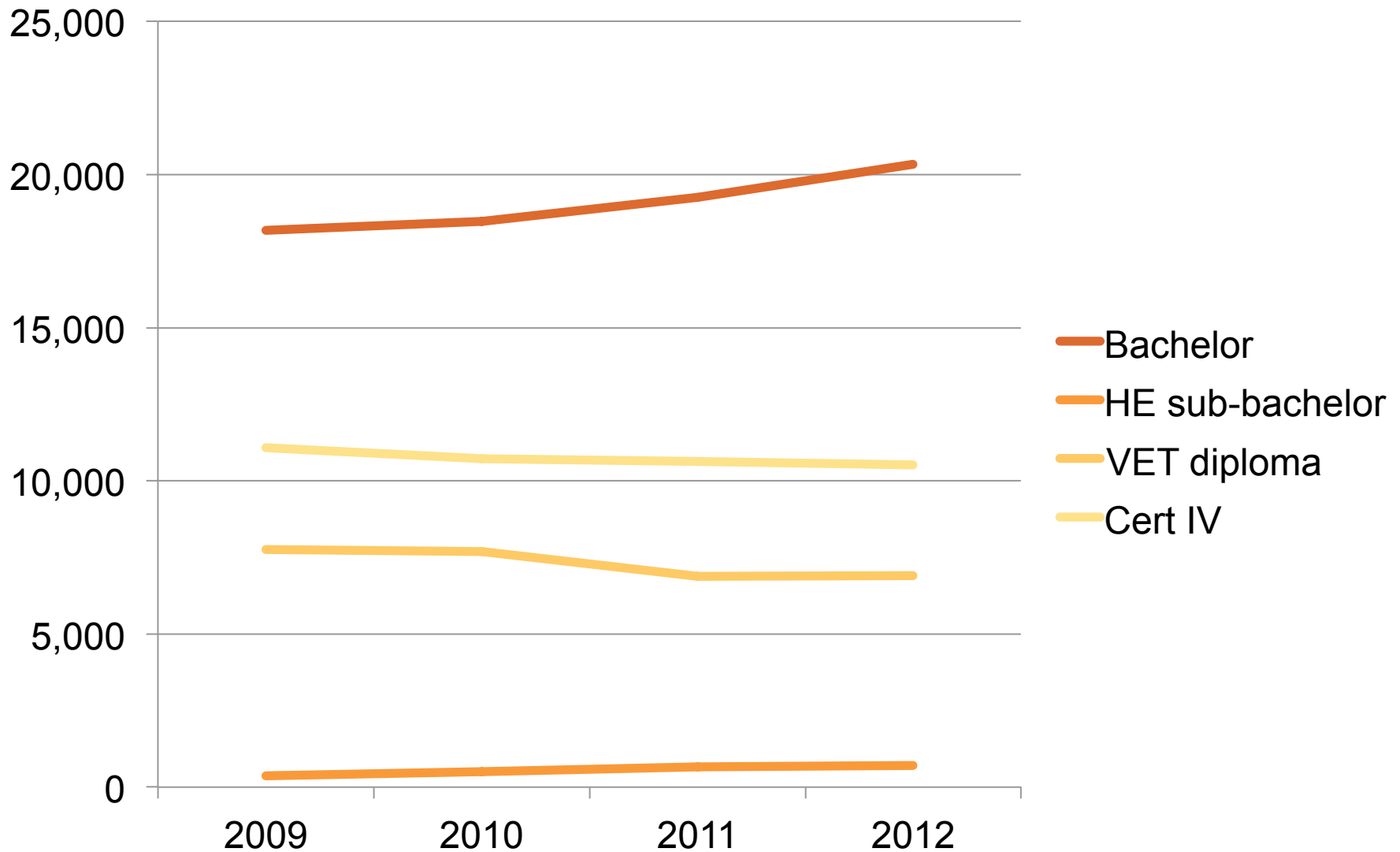
IT graduate full-time employment outcomes are around the average (4 months out)



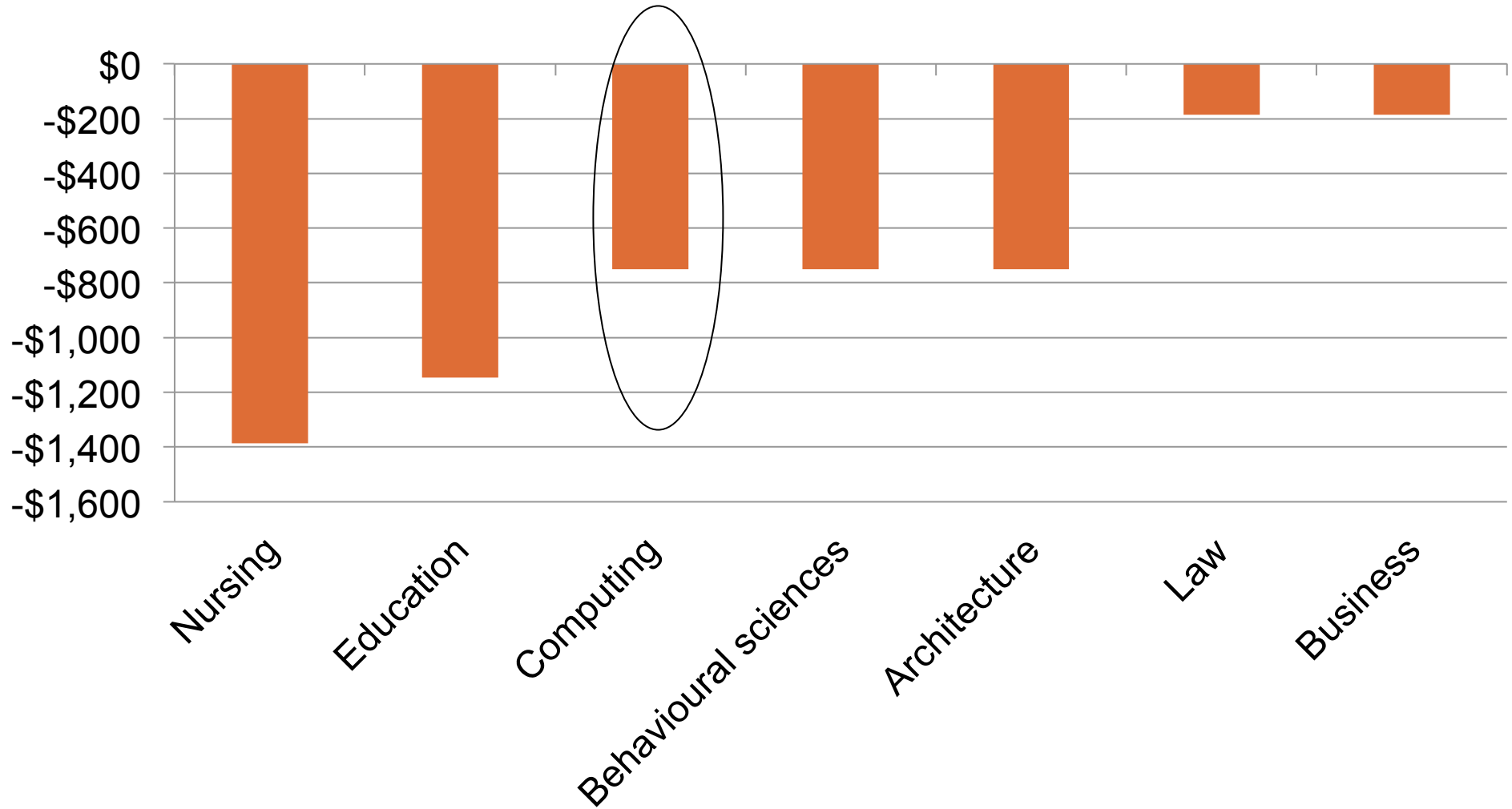
Sub-bachelor higher education courses to enter the demand driven system



IT domestic enrolments, by level of education



Proposed reduced Commonwealth contributions



Private unis and non-uni higher education providers to join demand driven system

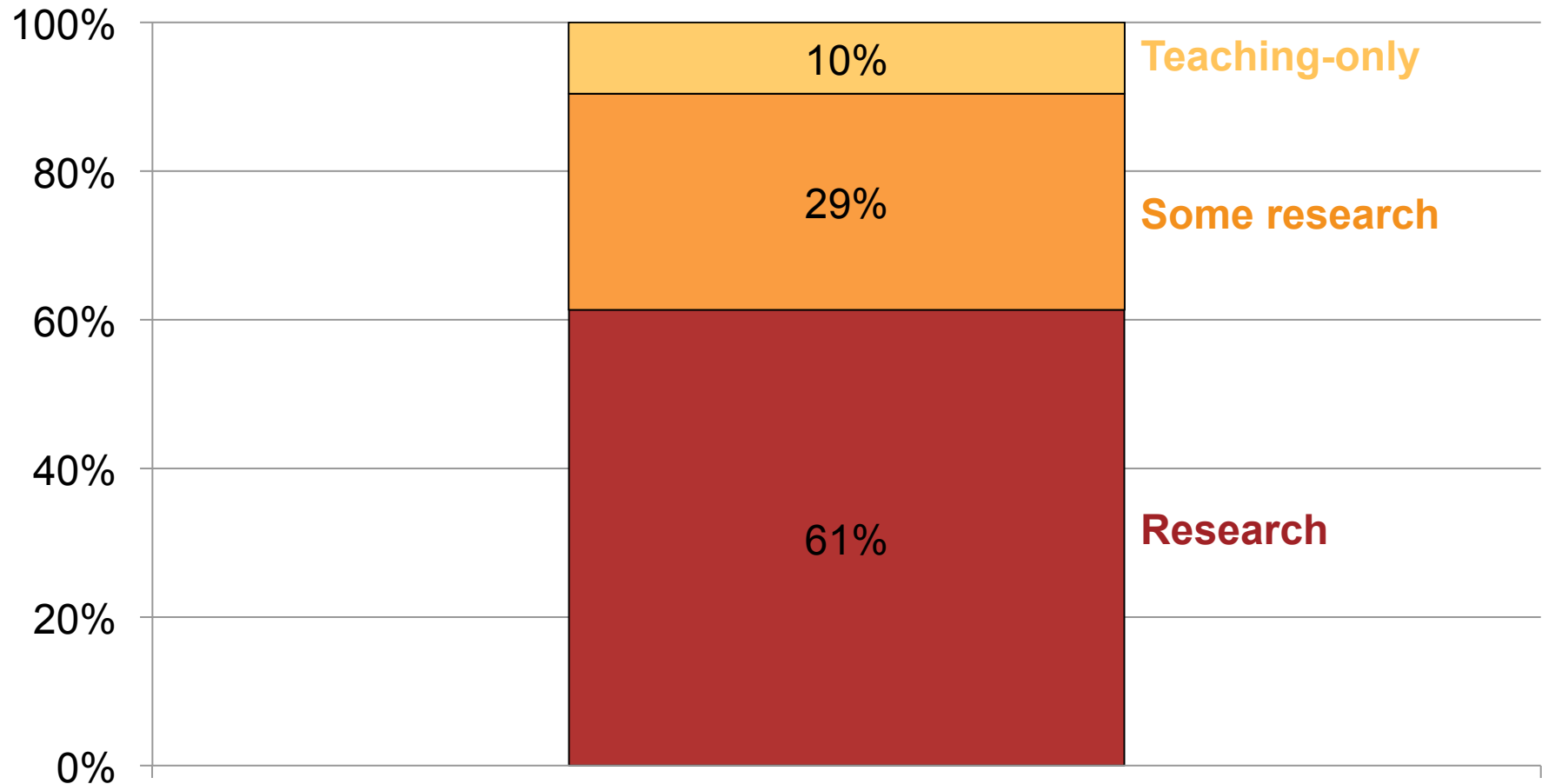
The logo for Holmesglen, featuring the word "holmesglen" in a light blue, lowercase, sans-serif font on a dark grey background.

Programs Higher Education

Higher Education Programs

The logo for Kaplan Australia, featuring the word "KAPLAN" in white, uppercase, sans-serif font, followed by a white arc that underlines the letters and extends to the right, and the word "AUSTRALIA" in white, uppercase, sans-serif font to the right of the arc.

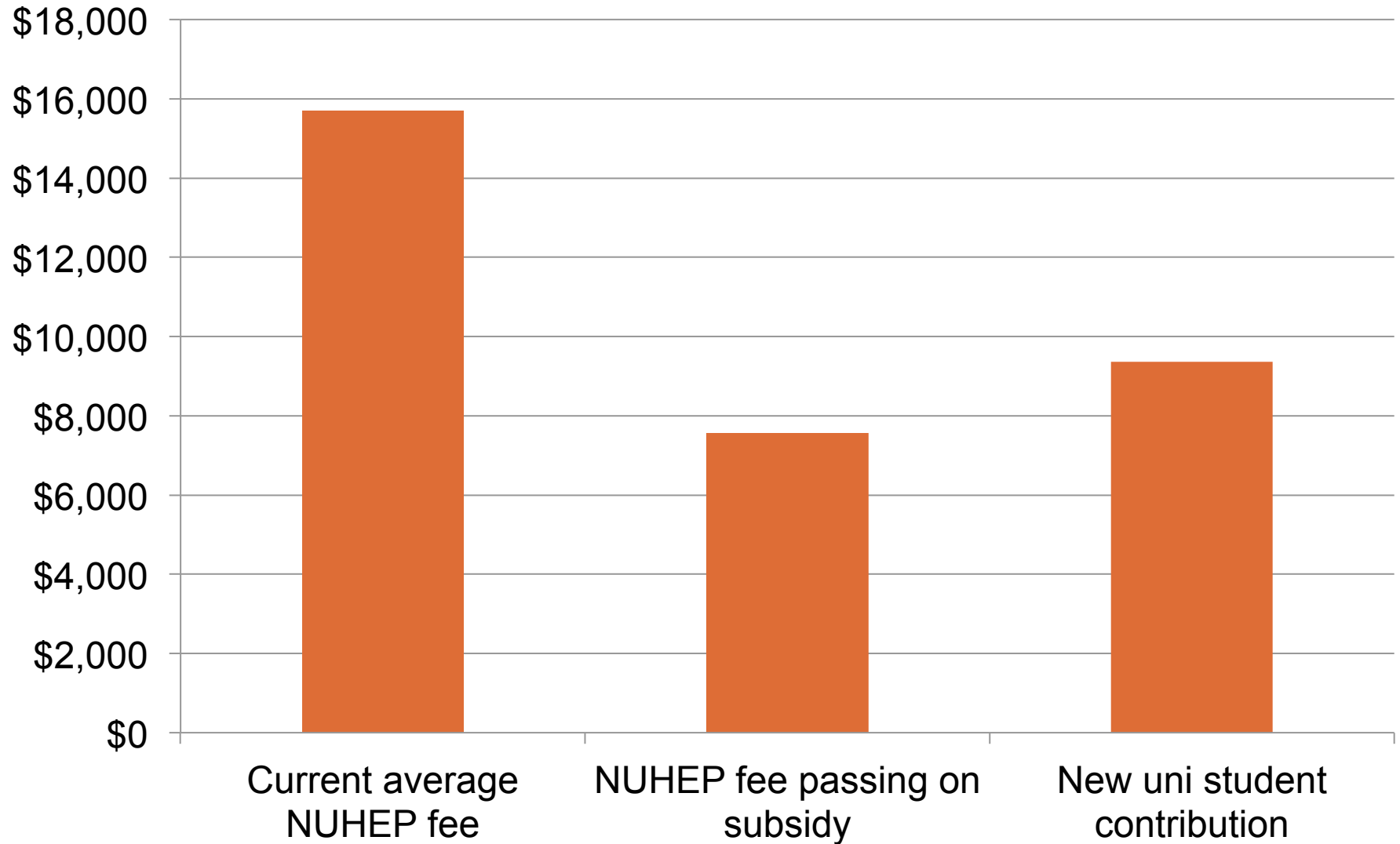
Dangers of funding research through student-driven funding



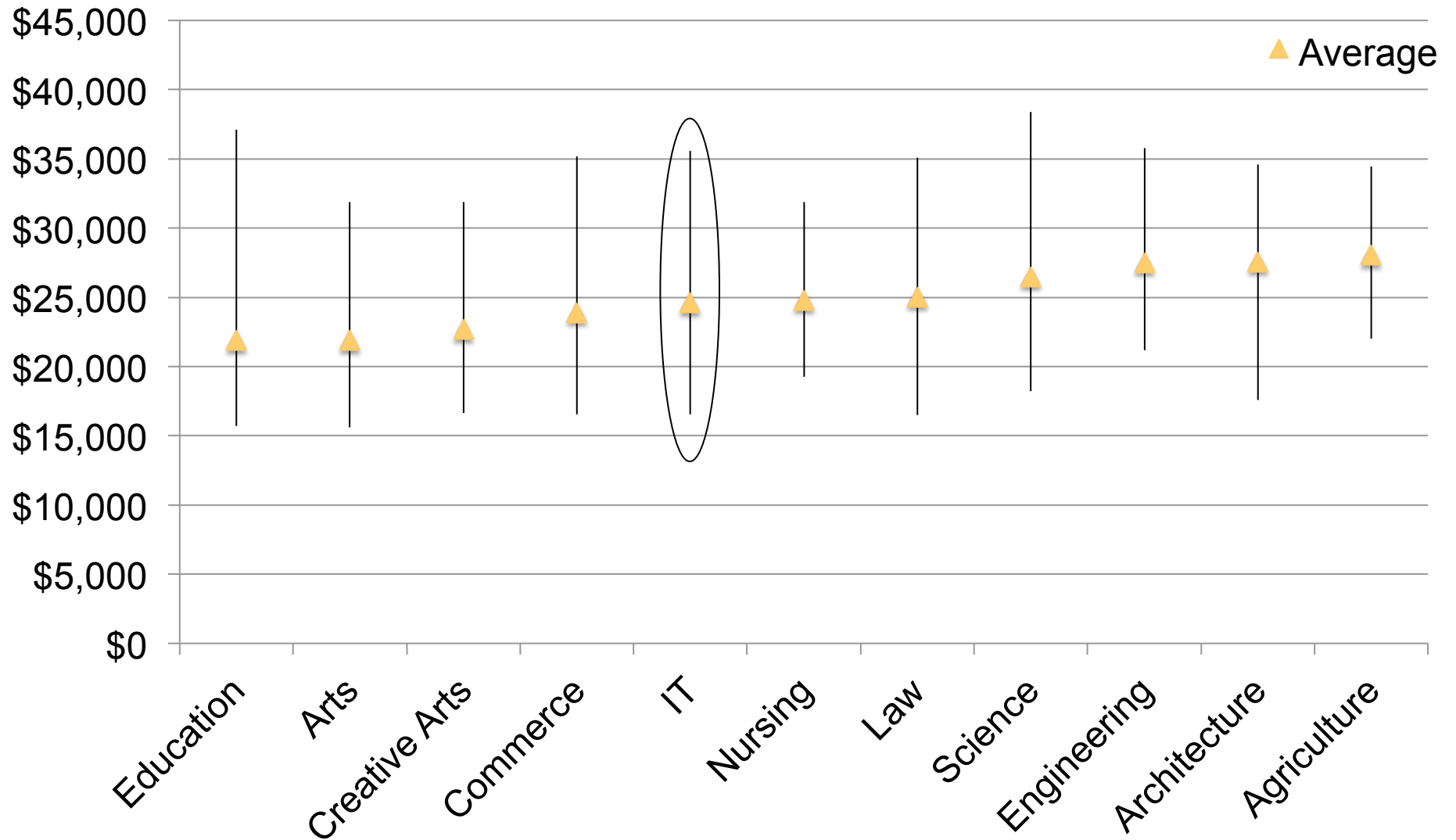
Sources: DEEWR(2013), ARC(2013)

Notes: The data excludes departments with 200 or less teaching EFTSLs, where 'teaching EFTSL' includes doctorate by coursework, master's by coursework, other postgraduate, bachelor, associate degree, other undergraduate, enabling courses and non-award courses. 'Research' includes departments with greater than 5 research EFTSLs and awarded ERA ranking, where 'research EFTSL' includes doctorate and mater's by coursework. 'Teaching-only' includes departments without any research students and ERA ranking. 'Some research' includes all else. MCD University of Divinity and Batchelor Institute of Indigenous Tertiary Education are excluded due to sample size constraints.

Price competition?: IT diploma courses in non-university higher education providers



Annual international undergraduate fees by course 2014



Note: Medicine has been omitted due to it being an outlier. Its average fee is \$55,135.

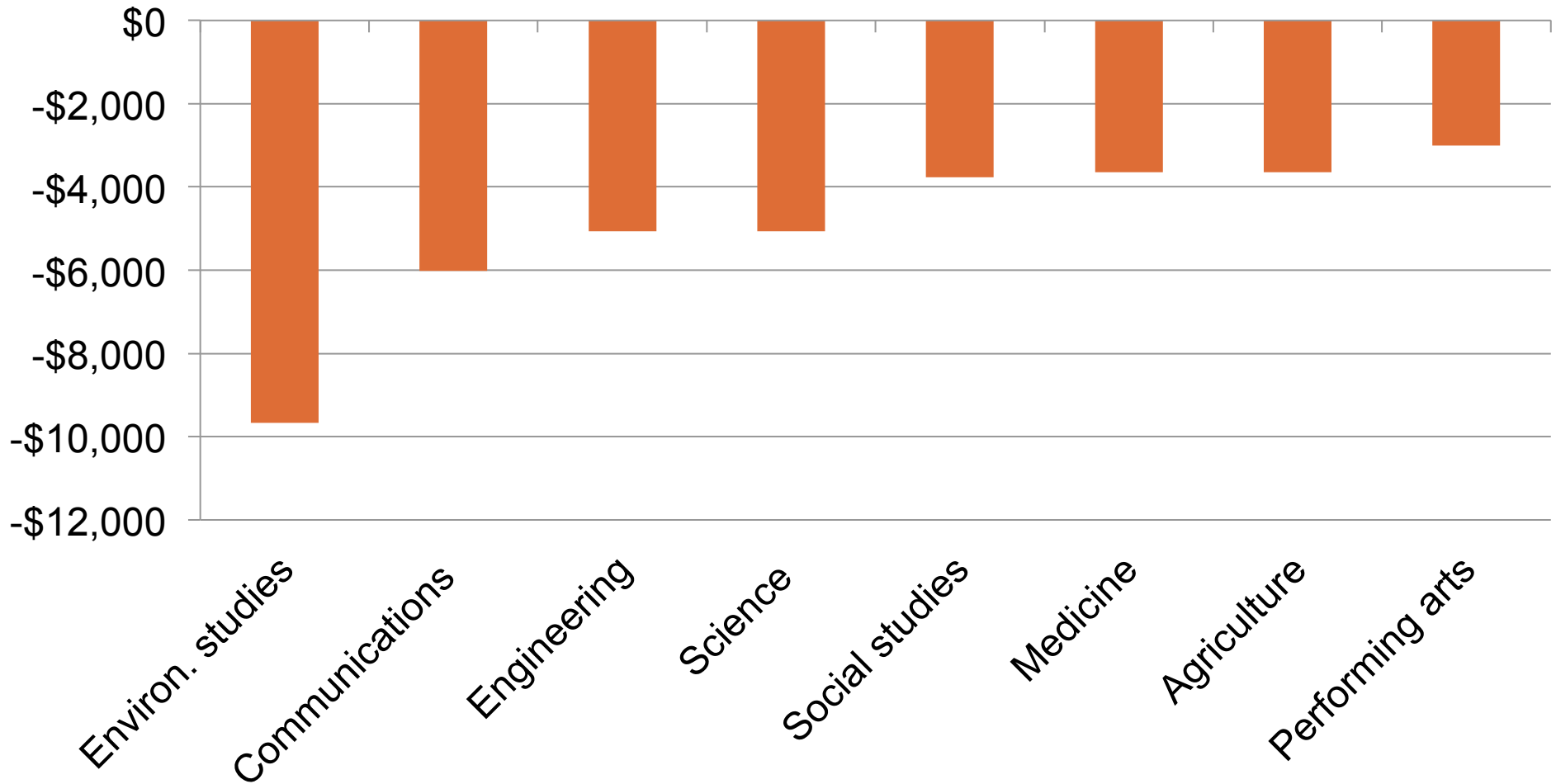


The demand driven system and ICT

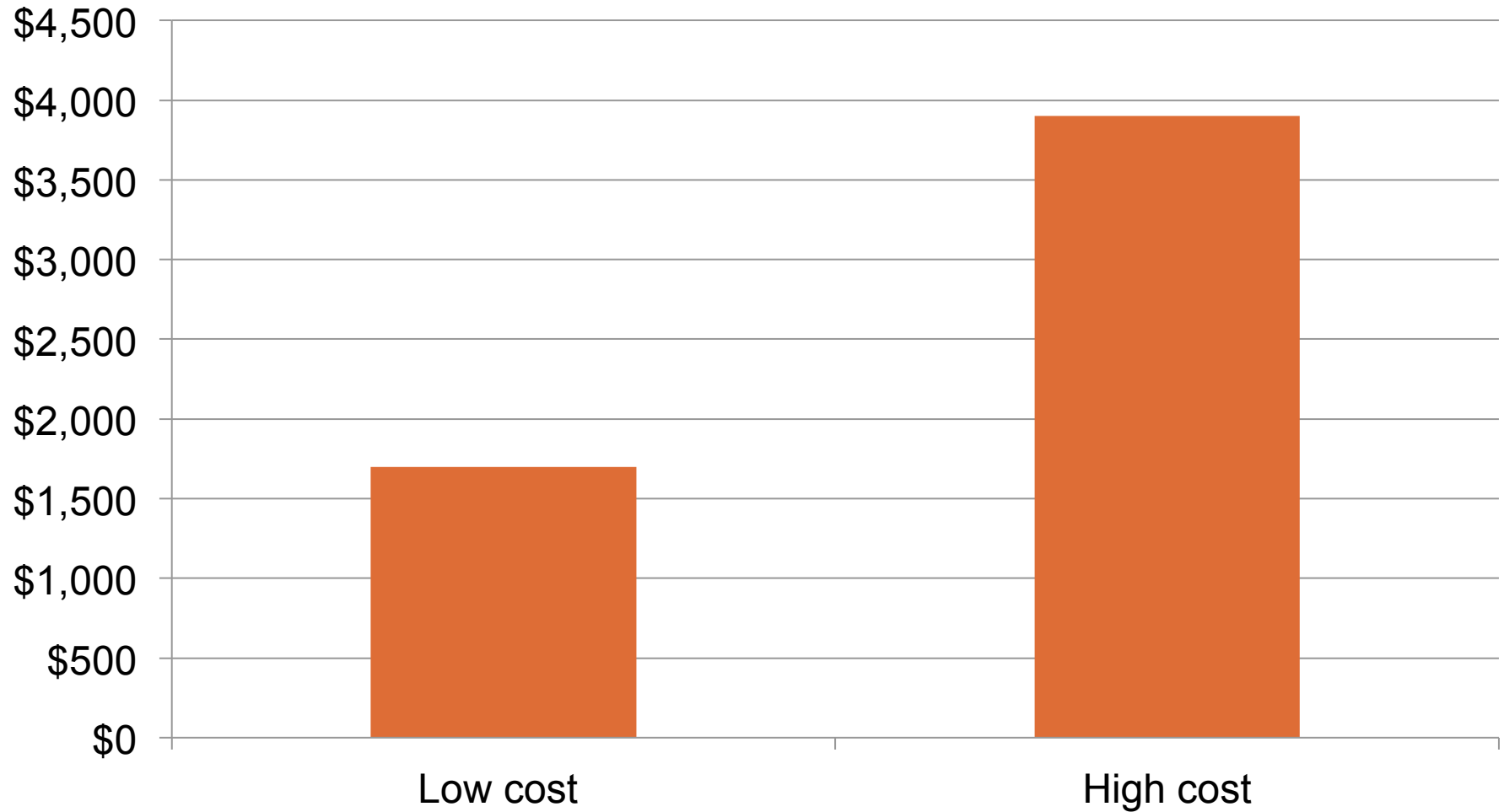
**Andrew Norton
t:@andrewjnorton**

8 July, 2014

Commonwealth contributions – big cuts

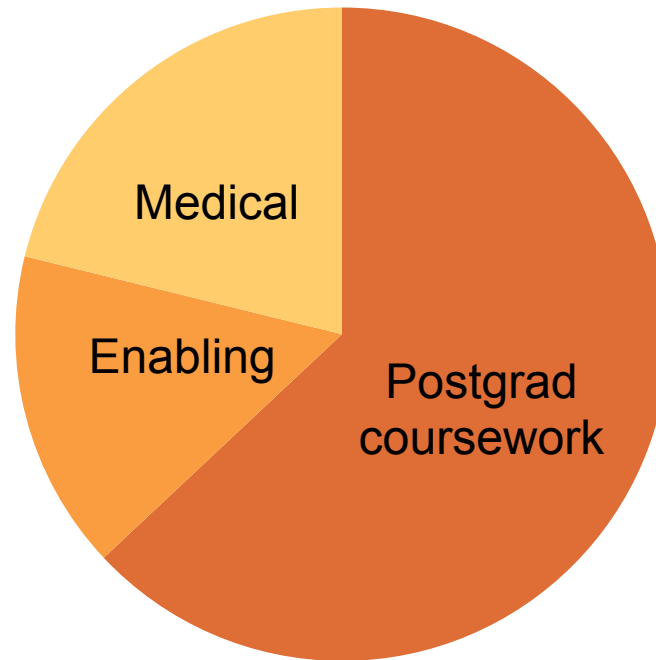


New student contribution – research places

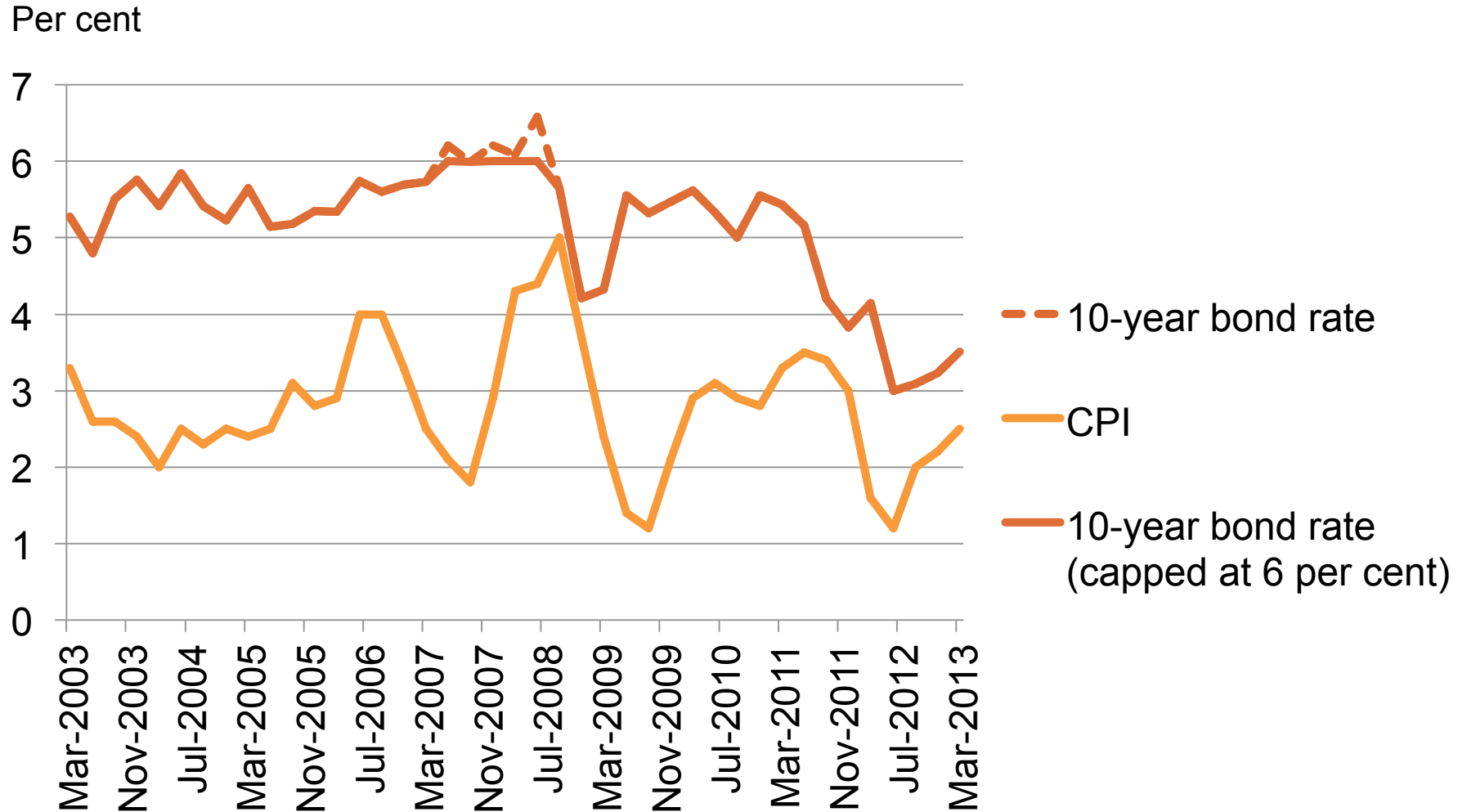


Outside the demand-driven system

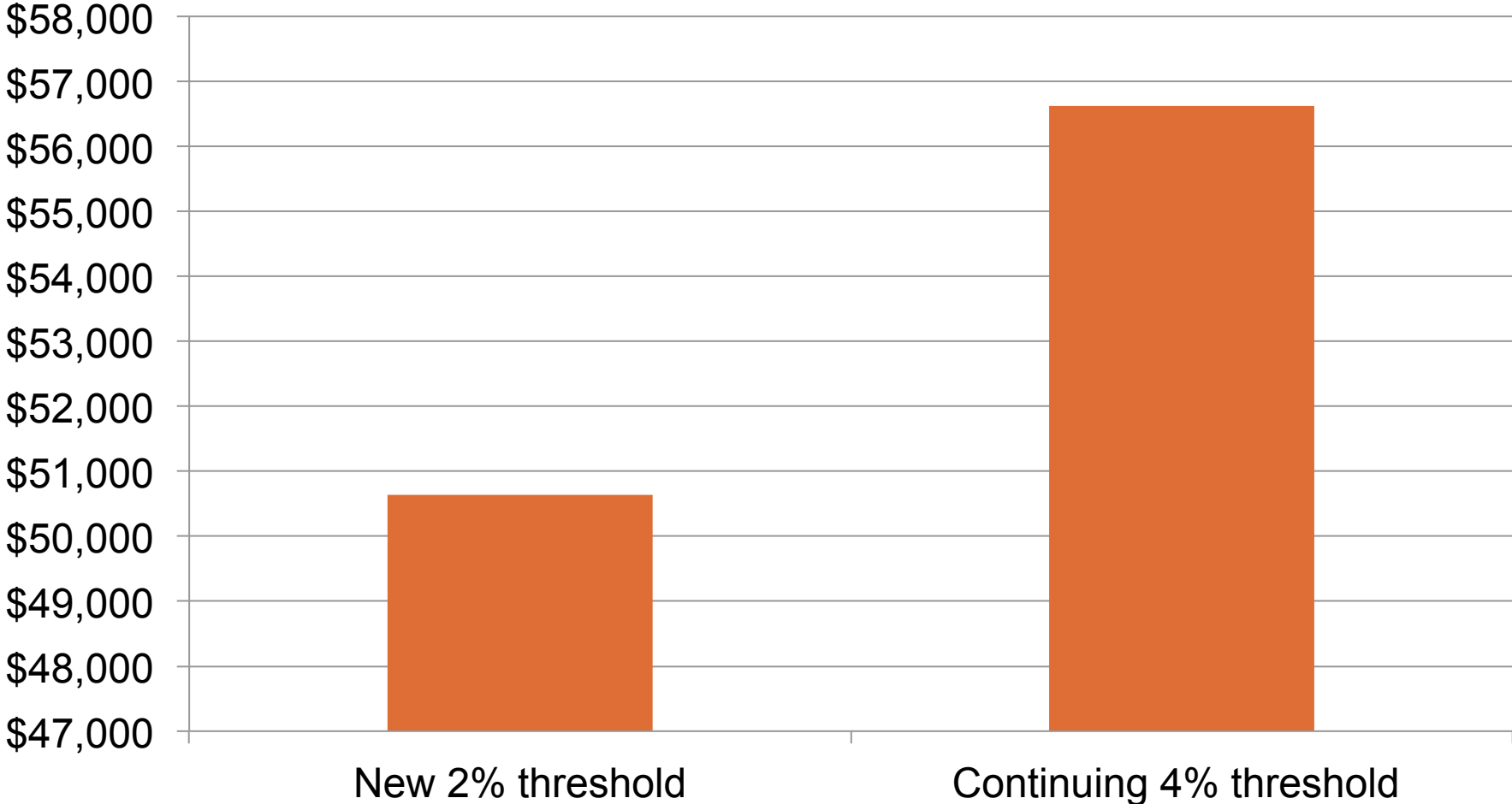
2014-15 (62,300 places)



Real interest rates on HELP debt



New first HELP repayment threshold



Graduates looking for full-time work, approx 4 months after completion (%)

